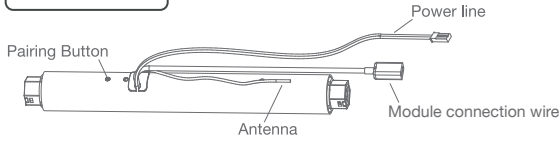
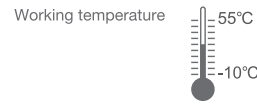
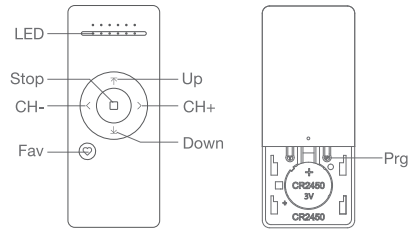


# Venetian Blind Wi-Fi Motor User Manual

## 01 Product Info



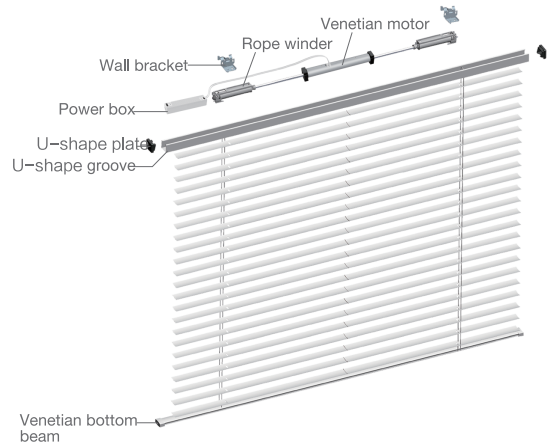
### Remote Controller Buttons



### Models & Parameters (more info please refer to the nameplate)

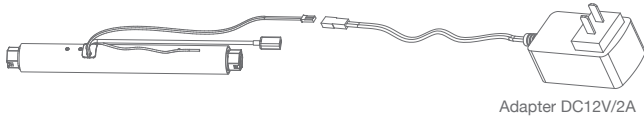
|          |          |            |                        |              |               |              |                         |
|----------|----------|------------|------------------------|--------------|---------------|--------------|-------------------------|
| JCV      | 24       | S          | AE                     | D            | 08            | 30           | W                       |
| AC Motor | 24-φ25mm | S:Standard | AE:with adapter supply | Dual driving | Torque:0.8N.m | Speed: 30Rpm | W:external Wi-Fi module |

## 02 Installation

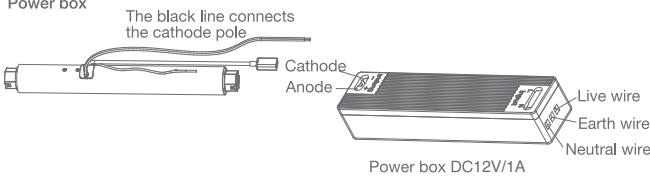


## 03 Power Options

### Adapter



### Power box



## 04 Caution!



- This product is for indoor use only, do not use outdoor or in humid environments.
- Power supply: adapter 12V/2A, power box 12V/1A.
- The motor will jog in operation, please do not proceed to the next step until it complete.
- During operation, the effective interval of the transmitter button operation is 10 seconds. If there is no effective transmitter operation for more than 10 seconds, it will automatically exit the current mode.
- The motor can be paired with max 10 controllers.
- Upper&Lower limits cannot be set at the same position, limits saved even power off.
- The motor runs constantly for at 6 mins max without any other operation.
- Do not lift the motor by grabbing and pulling the power wire or the antenna.

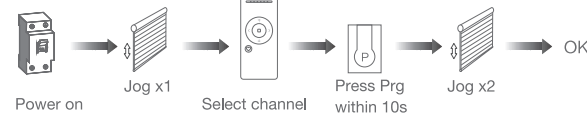
## 05 Instructions

### Pairing Button functions

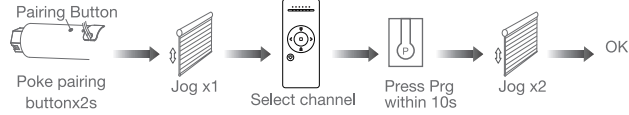
| Functions                             | Operation    | Jogging time | Note  |
|---------------------------------------|--------------|--------------|---|
| Control the UP/STOP/DOWN of the shade | Short press  | /            | It should be used when limits being set   |
| Adding/Removing Controller            | Hold for 2s  | Jog*1        | Operation needs be done within 10s  |
| RF Control Inactive                   | Hold for 6s  | Jog*2        | Hold Pairing button for 6s, jog twice to show the motor RF control is inactive; Hold Pairing button for 2s, the RF control is active again. |
| Direction Reverse                     | Hold for 10s | Jog*3        | All settings saved after direction reversed   |
| Reset                                 | Hold for 16s | Jog*4        | All settings deleted  |

## a.Pairing Motor with Controller

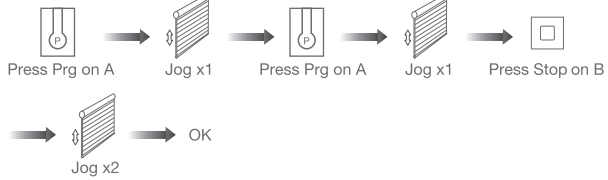
### Way 1: Before adding a new controller



### Way 2: After motor is powered on for more than 10s

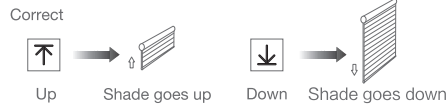


### Way 3: Power on, add controller B via pre-existing controller A

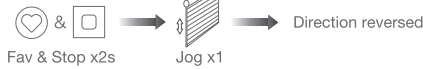


Note: Pairing can not be done under group channel or 0 channel.

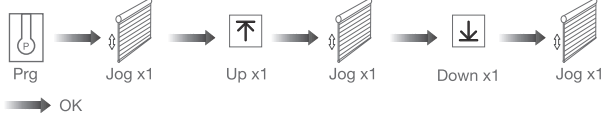
## b.Direction Reverse



If the limits are not set, and direction goes opposite.

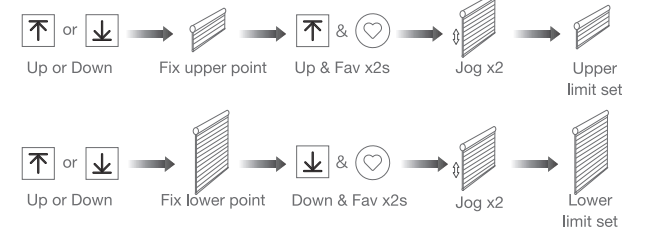


If limits are set and direction goes opposite.



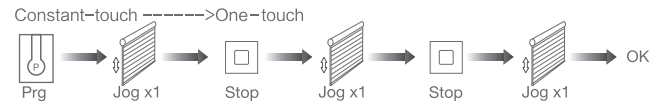
Note: Do reverse the direction when it goes opposite.

## c.Upper&Lower Limits Setting



Note: Upper&Lower limits cannot be set at the same point. Before limits set, the motor will run in one-touch mode by pressing Up or Down, hold Up or Down for 2s, motor runs in constant-touch mode. Once limits set, press Up or Down, motor runs in constant-touch mode.

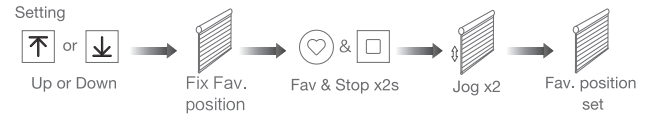
## d.One-touch/Constant-touch Mode



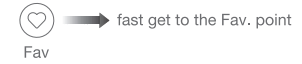
Same operation can toggle from one-touch to constant -touch mode.

Note: When motor in one-touch mode, hold Up or Down for more than 2s, it will run in constant-touch mode.

## e.Setting and Cancelling Favorite Position



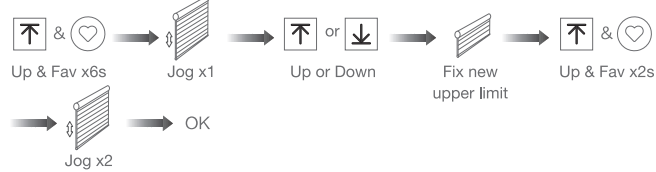
## f.Hot key to the Fav. Position



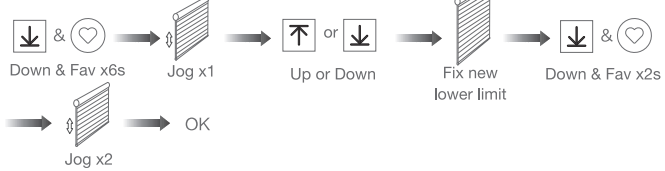
Note: The Fav.position setting only can be done alter upper&lower limits set.

### g. Adjusting Upper & Lower Limits

Adjust Upper limit

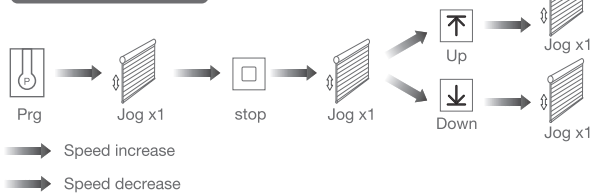


Adjust Lower limit



Note: The operation should be done within 4mins.

### h. Adjusting Motor Speed



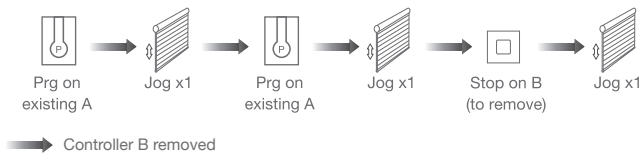
Note: If motor doesn't jog, the max/min speed has already been reached. There are 3 speeds adjustable.

### i. Removing Controllers

Remove a single controller



Remove controller B via pre-existing controller A

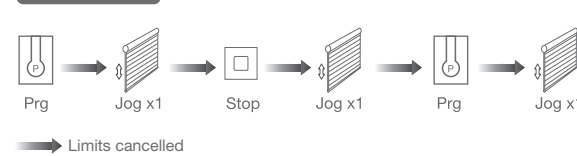


Remove all controllers:



Note: All the settings are saved even controllers removed (limits set are saved). Controller A/B are already paired to motor.

### j. Cancelling Limits



Note: It is forbidden to run the motor if installed into the shade without limits. Limits should be set immediately to protect the shade.

## 06 Installation & Connecting to external Wi-Fi module network



- Working voltage: 3V~3.6V
- Supporting protocol: 802.11B/G/N20
- Certification: CE, FCC
- Working Temperature: -10°C~55°C
- For Indoor Use only

### \*Connection requirement

- Make sure the Wi-Fi module and smart phone be connected to the same Wi-Fi network.
- The smart phone needs to connect to Wi-Fi network and turn on the Bluetooth function first.

### 1 Download APP

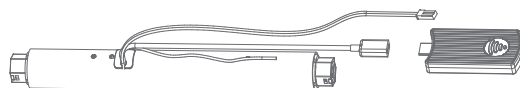
a. Search "Smart Life" in the app store or scan the QR code



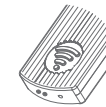
Smart Life

### 2 Add Device

a. Power on, insert Wi-Fi module to motor module connection wire

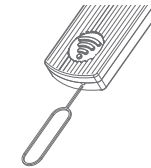


b. Wait for 10s to see if the indicator is blinking



c. If indicator didn't blink, pls try:

Method 1: Long insert RESET button until indicator blinking, motor's ready to Wi-Fi connection

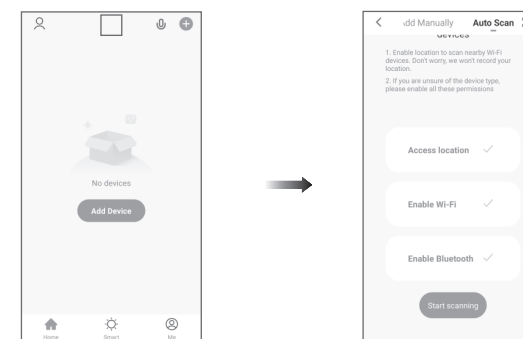


Note: You can try Method 2 if it is not easy to insert RESET on module

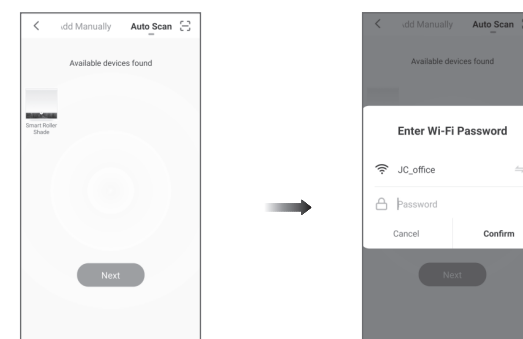
Method 2: Short Press Prg on back of controller, motor jogs once; short press Down, motor jogs once, then short press UP, motor jogs once and blue indicator blinks which means motor enters Wi-Fi connection status.



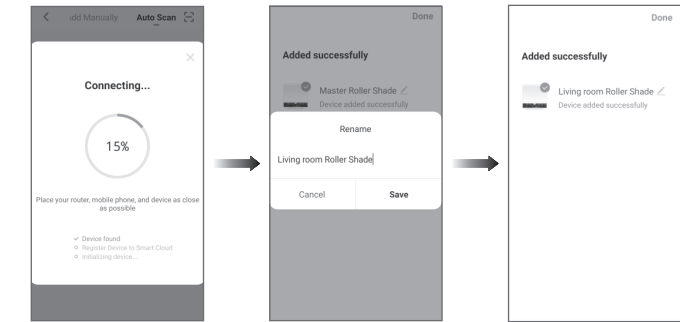
d. Click "+" in the upper right corner of the APP, then click "Auto Scan", the APP will automatically search for motor



e. Click "Next" when you find the device, enter the Wi-Fi account password and click "Confirm" to connect.



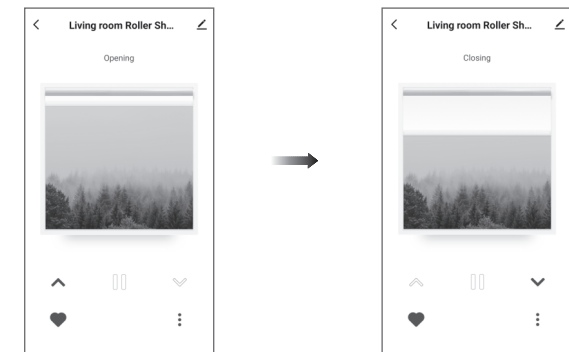
f. After adding device successfully, tap "✓" after the device name to modify the device name.



g. The Wi-Fi module indicator is always on after successful network connection.



h. Enter the main interface to control the operation of the venetian blind.



## 07 Troubleshooting

| Fault                            | Cause  | Solution  |
|----------------------------------|--|---|
| Motor does not work              | 1.Controller not paired<br>2.Motor inactive                        | 1.Add controller<br>2.Poke Pairing button x2s to activate motor |
| Motor stops suddenly             | 1.Upper & Lower limit set incorrectly<br>2.Shade exceed rated load | 1.Re-set Upper & Lower limits<br>2.Adjust load                  |
| Motor just goes in one direction | Wrong limits set   | Cancel original limits, set new limits                          |