

JCC50STEW

Curtain Motor

User Manual

01 Product Info



Working temperature

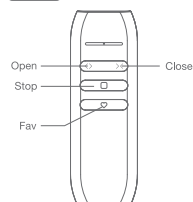


Power Options



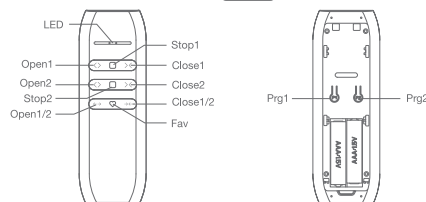
Remote controller buttons

Front



JCHR35W3A1-Single control

Back



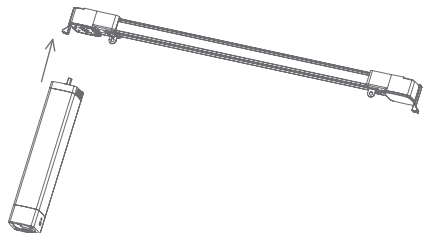
JCHR35W3A3-Dual control

Models & Parameters (for details about other parameters, see the product nameplate)

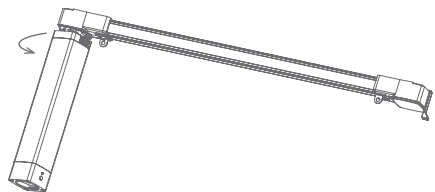
JCC	50	S	TE	12	14	W
Curtain motor	Tube Diameter: 50mm	S: Standard	TE: Transformer	Torque: 1.2 N.m	Speed: 14cm/s	Built-in Wi-Fi module

02 Installation

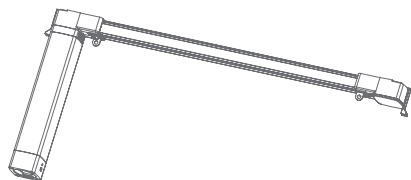
Step 1: Insert motor shaft in arrow direction into the drive pulley



Step 2: Rotate motor and circlip reset automatically



Step 3: Check circlip position



Removing operation is the same as the installation

03 Caution!



- This product is for indoor use only, do not use outdoor or in humid environments.
- The motor will response in operation, please do not proceed to the next step until it complete.
- During operation, the effective interval of the transmitter button operation is 10 seconds. If there is no effective transmitter operation for more than 10 seconds, it will automatically exit the current mode.
- The motor can be paired with max 10 controllers.
- The open&close limits cannot be set at the same point. Limits saved even power off.
- The motor runs constantly for at 6 min max without any other operation.
- With soft start&stop function, the motor will start and stop slower to make it run elegantly.
- Do not lift the motor by grabbing the wire or antenna.

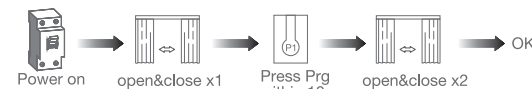
04 Instructions

Motor head button (H) functions

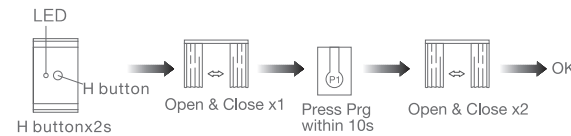
Functions	Operation	Jogging Time	LED lamp flickers	Note
Control the OPEN/STOP/CLOSE of the Shade	Short press	/	/	Can only operate after limits are set
Adding/Removing Controller	Hold for 2s	Open & Close *1	Flicker*1	Operation needs be done within 10s
Wi-Fi connecting	Hold for 6s	Open & Close *2	Flicker*2	Entering Wi-Fi connection mode
Direction Reverse	Hold for 10s	Open & Close *3	Flicker*3	All settings saved after direction reversed
Reset	Hold for 16s	Open & Close *4	Flicker*4	All settings deleted

a. Pairing Motor with Controller

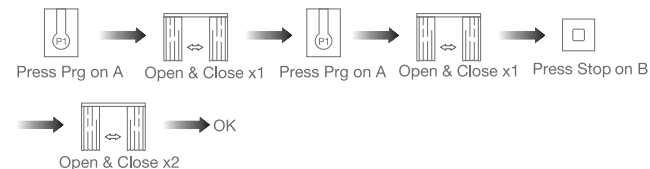
Way 1: Before adding a new controller



Way 2: After motor is powered on for more than 10s



Way 3: Power on, add controller B via pre-existing controller A



Note: Pairing can not be done under group channel or 0 channel.

b. Direction Reverse

Correct

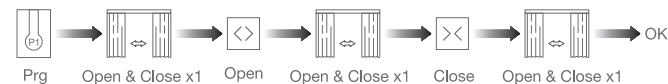


If the limits are not set, and direction goes opposite.



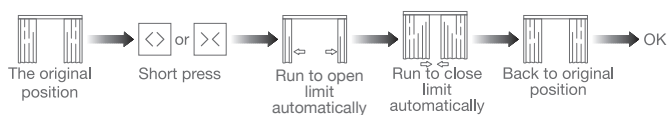
Fav & Stop x2s Open & Close x1

If limits are set and direction goes opposite.

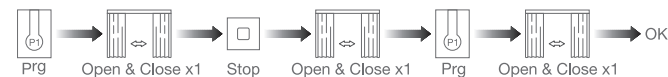


Note: Do reverse the direction when it goes opposite.

c. Automatic Open & close Limits Setting



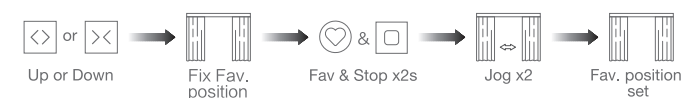
d. Deleting Open & Close Limits



Note: Delete the limits and reset limits after the curtain fabric or track changed

e. Setting and Cancelling Favorite Position

Setting



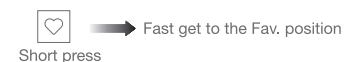
Cancelling



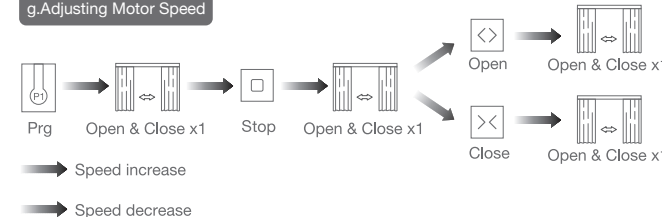
You can delete the favorite position by repeating the above operation

Note: The Fav. position must be set after open&close limits set

f. Hot key to the Fav. Position



g. Adjusting Motor Speed



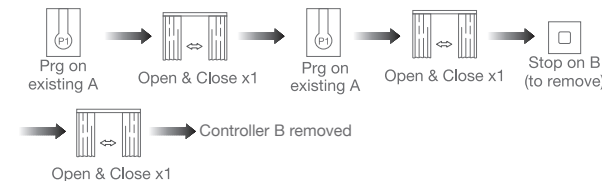
Note: If motor doesn't response, the max/min speed has already been reached. There are 3 speeds adjustable.

h. Removing Controllers

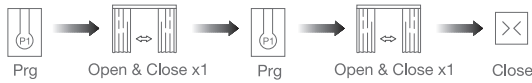
Remove a single controller



Remove controller B via pre-existing controller A



Remove all controllers:



Open & Close x1

Note: All the settings are saved even controllers removed (limits set are saved)
Controller A/B are already paired to motor)

i. Adjusting Open & Close Limits



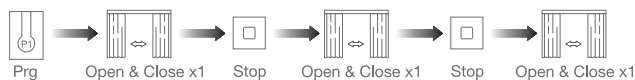
Motor run automatically to set open&close limits

Note: After the motor runs for a long time, if it does not close well or the stall protection well, please do this adjusting limits operation.

j. Cancelling Limits



k. Turn On/Off Manual Control Function



Manual control function is off

Note: a. You can turn on/off manual control function by repeating the above operation
b. Manual control function is on by factory default
c. When the manual control function is on, hand-pull the curtain, the curtain will automatically start running in the direction of pulling.

l. Open/Close Limits Setting Manually

Setting open limit



Note: Repeat the above to delete the open limit.

Setting close limit



Note: Repeat the above to delete the close limit.

05 Connecting to Wi-Fi network

*Connection requirement

The smart phone needs to connect to Wi-Fi network and turn on the Bluetooth function first.

1. Download APP

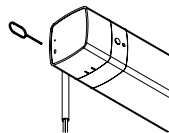
a. Search for "Smart Life" in the app store or scan the QR code



b. Complete account registration and login to the app

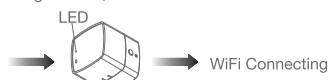
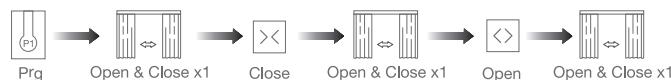
c. Operate the motor to enter Wi-Fi network connection mode:

Way 1: Poke the reset button in the small hole below for 6 seconds or more until the light flashes, to make the motor is ready for connecting.



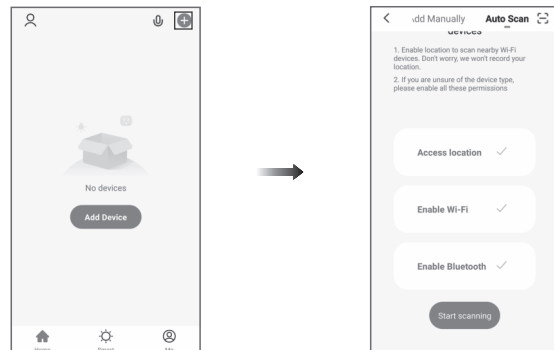
Remark: If Way 1 is not convenient, Way 2 can be used.

Way 2:

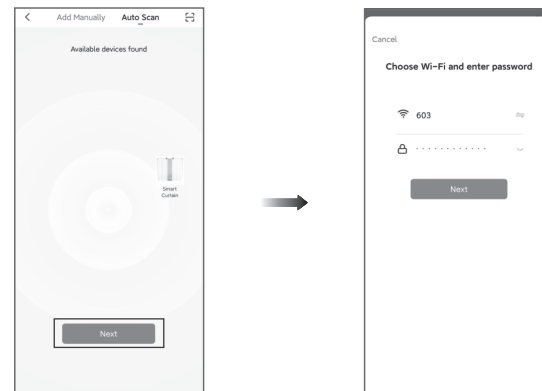


Blue LED Flash

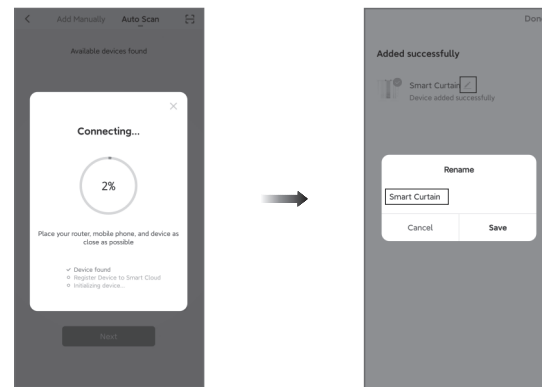
b. Click "+" in the upper right corner of the APP, then click "Auto Scan", the APP will automatically search for motor



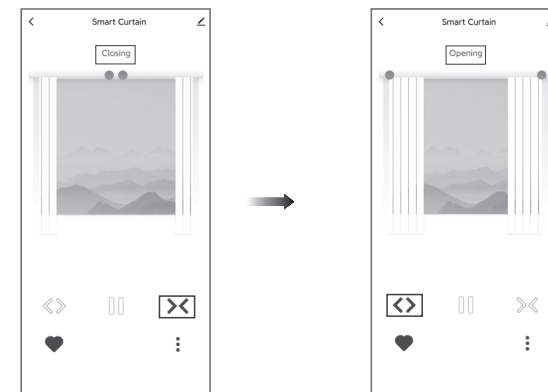
c. Click "Next" when you find the device, enter the WiFi account password and click "Next" to connect



d. After adding device successfully, tap "✎" after the device name to modify the device name.



e. Now the motor can be controlled by App from anywhere, anytime.



06 Troubleshooting

Fault	Cause	Solution
Motor works but curtain fabric doesn't run	Curtain track installed correct or not	Check and adjust loose fit of track&belt
Remote controller doesn't work	Controller run out of battery	Replace the battery
Motor doesn't work while controller indicator blinks	Motor and controller not paired	Pairing controller&motor
Curtain gap too big while close	Accessories such as belt changed the close limit; or open/close limit reset by manual setting	Delete open/close limits and reset new open/close limits
Cannot pull the curtain fabric by manual	Manual control function is off	Turn on manual control function by controller setting